

SAVYON V·I·E·W
— JERUSALEM —

the Penthouse

Welcome!

The Lobby




All renderings are for illustrative purposes only. Lighting fixtures, design accessories and furnishings are not included in the sales contract.

The Penthouse



Renderings include upgrades, furnishings, design elements and finishing materials that are not part of the standard specifications and are not included in the apartment price. The company is bound only by the details included in the sales contract and the attached technical specifications.

A modern luxury penthouse balcony with a glass-walled interior, outdoor seating, and a panoramic view of Jerusalem. The balcony features a wooden deck, a light blue sectional sofa with brown and grey cushions, two wicker armchairs with white cushions, and a small round coffee table. A white patio umbrella stands near the sofa. The glass-walled interior shows a contemporary living space with a white sofa, a coffee table, and a dining area. The view of Jerusalem is visible in the background, showing the city's architecture and greenery under a clear blue sky.

A luxury penthouse with glorious panoramic views of Jerusalem

The unique landscape of Jerusalem can be seen and experienced from the 27th floor penthouse balcony, which boasts majestic panoramic views of this legendary city.

Here you will enjoy the opportunity to live in a beautifully designed luxury penthouse that enables you to gaze out over all of Jerusalem at any time.

Renderings include upgrades, furnishings, design elements and finishing materials that are not part of the standard specifications and are not included in the apartment price. The company is bound only by the details included in the sales contract and the attached technical specifications.

The ultimate in —
LUXURY
living

The magnificent penthouses on the 27th floor enjoy an uninterrupted view and are designed to perfection with the highest premium specifications, making them the ideal place to fulfill all your design dreams.



21FL.

All renderings are for illustrative purposes only. Changes may be made in accordance with the requirements of the authorities and/or at the companies' discretion. The development of public areas may change in accordance with the decision of the local authority, which is solely responsible for performing such development.

The heart of Jerusalem beats here,
every moment of every day...

All renderings are for illustrative purposes only. Changes may be made in accordance with the requirements of the authorities and/or at the companies' discretion. The development of public areas may change in accordance with the decision of the local authority, which is solely responsible for performing such development.

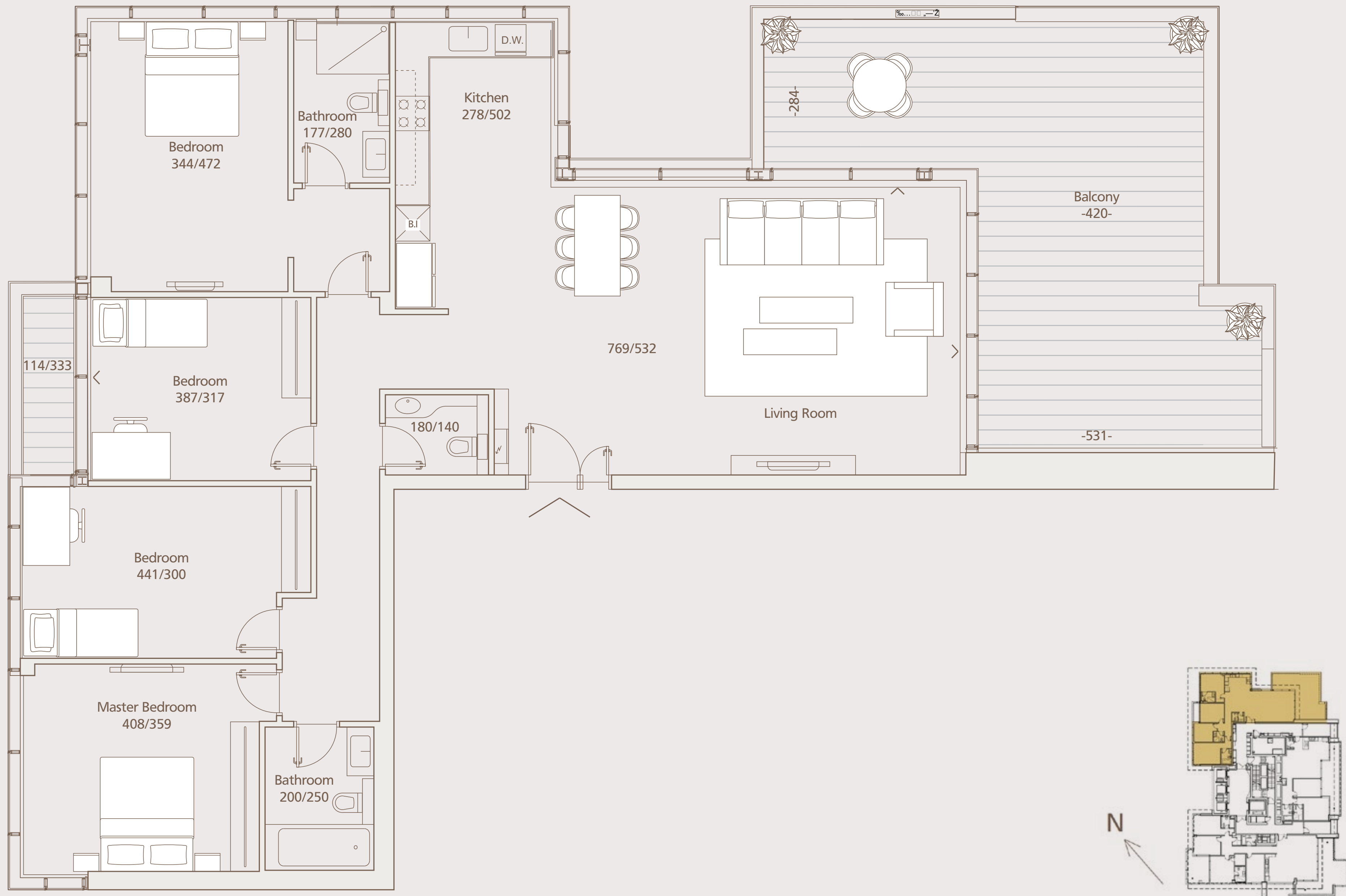


These two luxurious penthouses were impeccably designed to grant the highest standard of residential experience, including spacious sun terraces overlooking the spectacular Jerusalem cityscape. Intensive thought has been invested into every detail of each apartment, as well as the design of the building and its exceptional specifications. This is what has made Savyon View the most prominent, breathtaking project in the skyline of Jerusalem, the eternal capital.

All renderings are for illustrative purposes only. Changes may be made in accordance with the requirements of the authorities and/or at the companies' discretion. The development of public areas may change in accordance with the decision of the local authority, which is solely responsible for performing such development.

Your New View

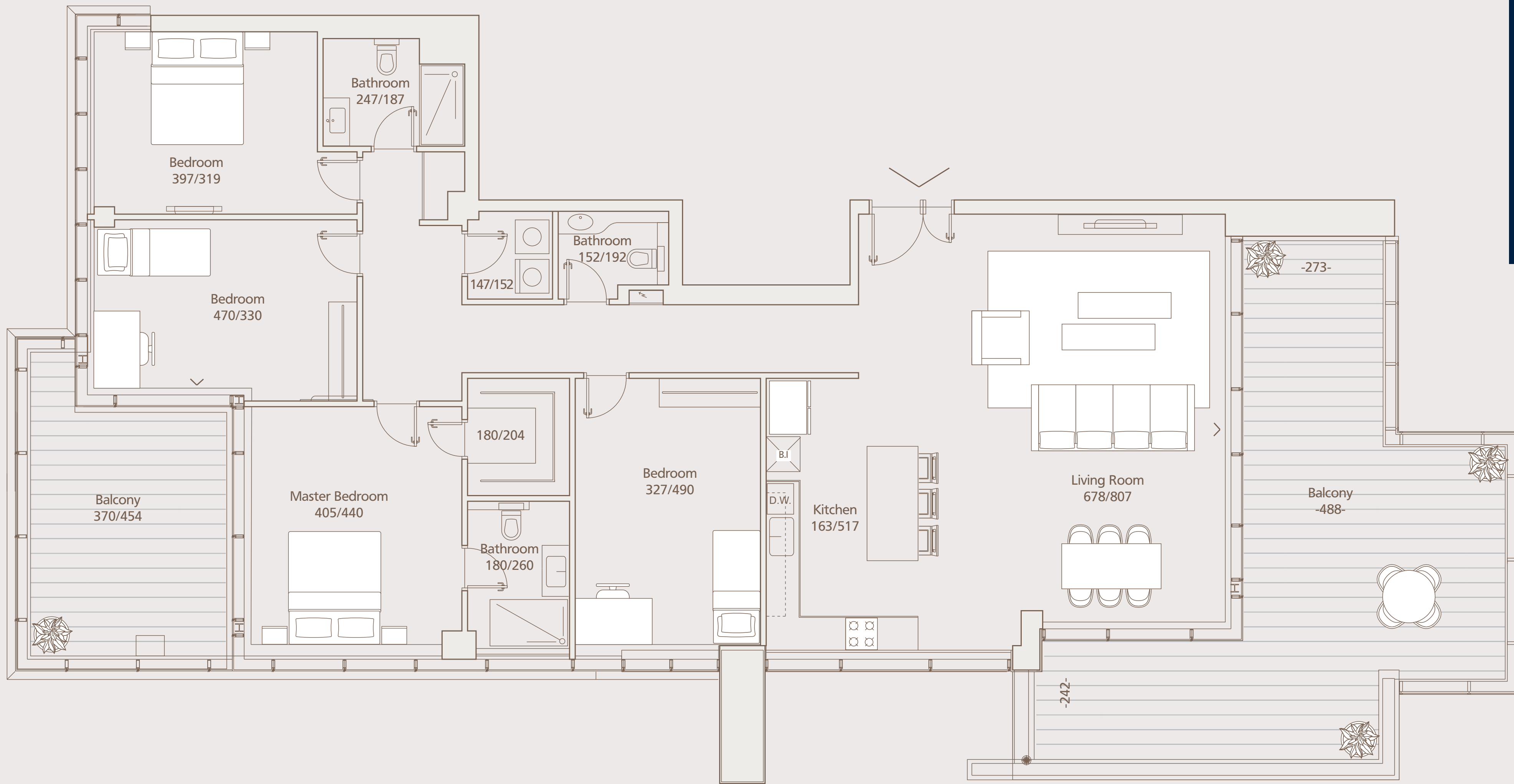
Watch the video



5A

SAVYON
V · I · E · W
JERUSALEM

4 Bedroom Penthouse
27th Floor
158 sqm | 53 sqm balcony



5B

SAVYON
V·I·E·W
— JERUSALEM —

4 Bedroom Penthouse
27th Floor
175 sqm | 63 sqm balcony



Main Technical Specifications

The Tower:

- Magnificent main entrance lobby (approx. 7.5m high ceilings) featuring an impressive architectural design with well-thought-out special elements
- Shared rooftop garden on the adjacent office building for the benefit of all Savyon View residents
- Lobby and common terrace on the 21st floor for the benefit of premium floor residents – 21st floor and above
- Guard station in the main entrance lobby
- Spacious, air-conditioned residents' club
- Mailbox room
- Private parking for each apartment (except for 1-bedroom apartments)
- Garbage disposal chute
- 4 luxury high-speed elevators with stylish cabins

In the Apartment:

- Mini VRF air conditioning system
- Multi-central air conditioning system with controls in each room (apartments with 2 or more bedrooms)
- White acrylic paint on the apartment walls
- Compliance with sustainable green building standards (reduced pollutants, recycling, energy efficiency, quality of life)
- Quality interior doors with broad lintels filled with flexboard (color of your choice), "Unique" model by Pandoor or equivalent
- Secure, elegant entrance door
- Double glazed windows / curtain walls in the living room and bedrooms
- Electric roller blinds in the bedrooms (except for the safe room)
- Electric blackout curtain with stylish curtain rail in the living room and in the bedrooms with an exterior curtain wall
- Penthouses – decking on the rooftop terraces



Main Technical Specifications

Kitchen & Bathrooms:

- Built-in unit for an oven and microwave
- Undermount sink
- Double sink for apartments with 2 or more bedrooms
- Preparation for a dishwasher
- Caesarstone countertop
- Gas outlet for cooking (in the penthouse, an additional gas outlet on the terrace)
- Wall-mounted toilets with concealed cisterns
- Bathroom cabinet and mirror in the master bathroom and general bathroom

Electricity & Communication:

- CCTV intercom with a color screen at the entrance to the apartment
- Preparation for a home theater system with 4 speakers in the living room
- Three-phase electrical connection
- TV and telephone outlet in all bedrooms and the living room
- Smart home: a central control system at the entrance to the apartment with up to 6 scenarios, including:
 1. Turning lights on and off.
 2. Raising and lowering / moving electric blinds and blackout curtains (including a Shabbat clock)
 3. Operating the air conditioning
 4. Operating the water heater (including a Shabbat clock)
 5. Displaying power consumption of the water heater, washing machine and oven (from 3 outlets)



INSPIRATION



The tower's impeccable design, combined with its high topographical location, enables residents to enjoy panoramic, majestic views of Jerusalem. Gaze out towards the Jerusalem Hills, the Old City, the Knesset (Israeli parliament), Government Campus and the city's spectacular skyline. All of these breathtaking sights look just like a picturesque postcard, yet one you can experience at any moment you choose.

Night view

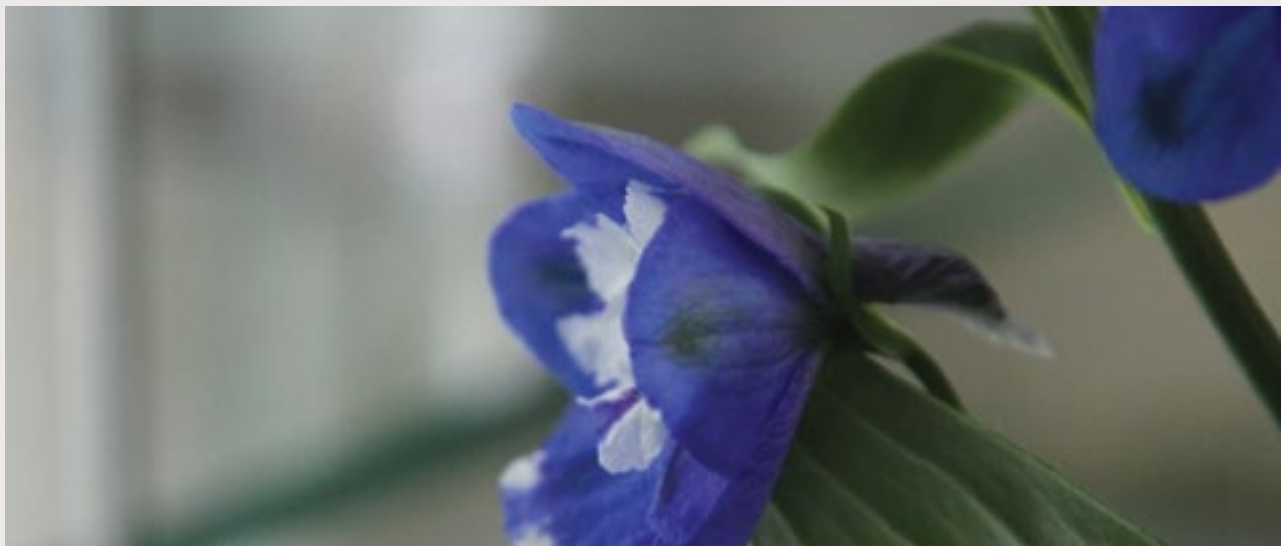
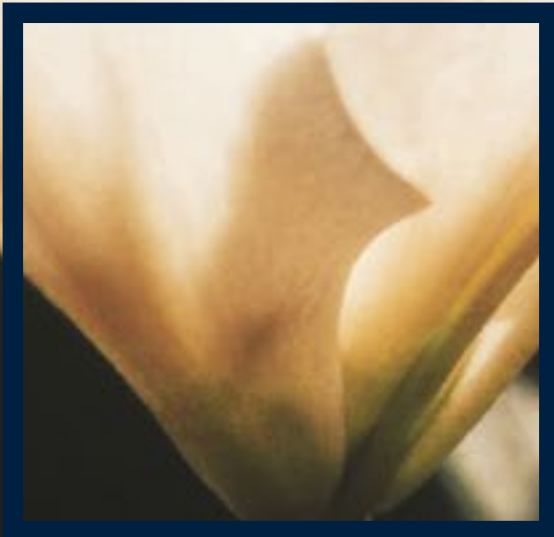
At the meeting point of Jaffa Street and HaNeviim Boulevard, between Mahane Yehuda Market and the Agrippas Pedestrian Mall.

All renderings are for illustrative purposes only. Changes may be made in accordance with the requirements of the authorities and/or at the companies' discretion. The development of public areas may change in accordance with the decision of the local authority, which is solely responsible for performing such development.

privacy &
garden —
luxury residence

All renderings are for illustrative purposes only. Changes may be made in accordance with the requirements of the authorities and/or at the companies' discretion. The development of public areas may change in accordance with the decision of the local authority, which is solely responsible for performing such development.

Touches of
nature at
the heart of
urban life.



The new residential concept we have created here is at the forefront of global green trends, inspired by the acclaimed eco-friendly luxury towers in Milan, New York and Tokyo. Two urban gardens have been planned by us and designed for residents' enjoyment: on the 10th floor, a rooftop garden is open to all tower residents, while on the 21st floor a garden with astounding panoramic views awaits all residents of the premium floors. In this way, you can experience the best of both worlds, nature and urban living, in one breath of fresh air.



Relax in
a green
environment

All renderings are for illustrative purposes only. Changes may be made in accordance with the requirements of the authorities and/or at the companies' discretion. The development of public areas may change in accordance with the decision of the local authority, which is solely responsible for performing such development.

Unique Architectural design

The tower's design and architectural planning preserves the city's unique charm while also setting a new standard of quality and luxury, from the entrance of the building through to each apartment. This includes secure private underground parking with CCTV monitoring and an opulent lobby, echoing the city's distinctive beauty and character, which has a 24/7 doorman station, residents' club and multipurpose lounge. The varied stylish apartments are beautifully designed and outfitted with the highest premium specifications by elite brands, and also feature spacious balconies with remarkable views of Jerusalem.

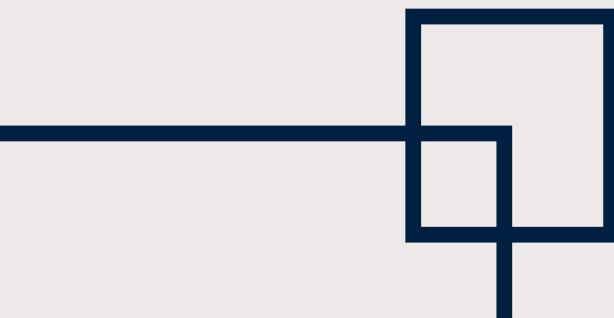
Architectural Element

Doritte Hoek, Project Architect
Doritte & Doron Hoek Architects

“Jerusalem is a city with many diverse faces, centuries of history, and a multifaceted mosaic of cultures and lifestyles. The challenge we faced at the Savyon View tower was creating a residential complex for the 21st century in the vibrant city center, yet capturing moments from the Old City. This is a residential complex that brings together authentic Jerusalem materials, spirit, exceptional prestige and shared balconies overlooking mesmerizing scenery. Here we have created a varied mix of apartments, meticulous specifications, a lavish lobby and a smart, practical design. All this is crowned by two spectacular, unique ecological gardens that stand out amid the Jerusalem landscape. One garden covers approximately 400 sqm on the 10th floor, while the other covers around 200 sqm on the 21st floor. Two green islands in the colorful urban heart of the city.”



Art is a language

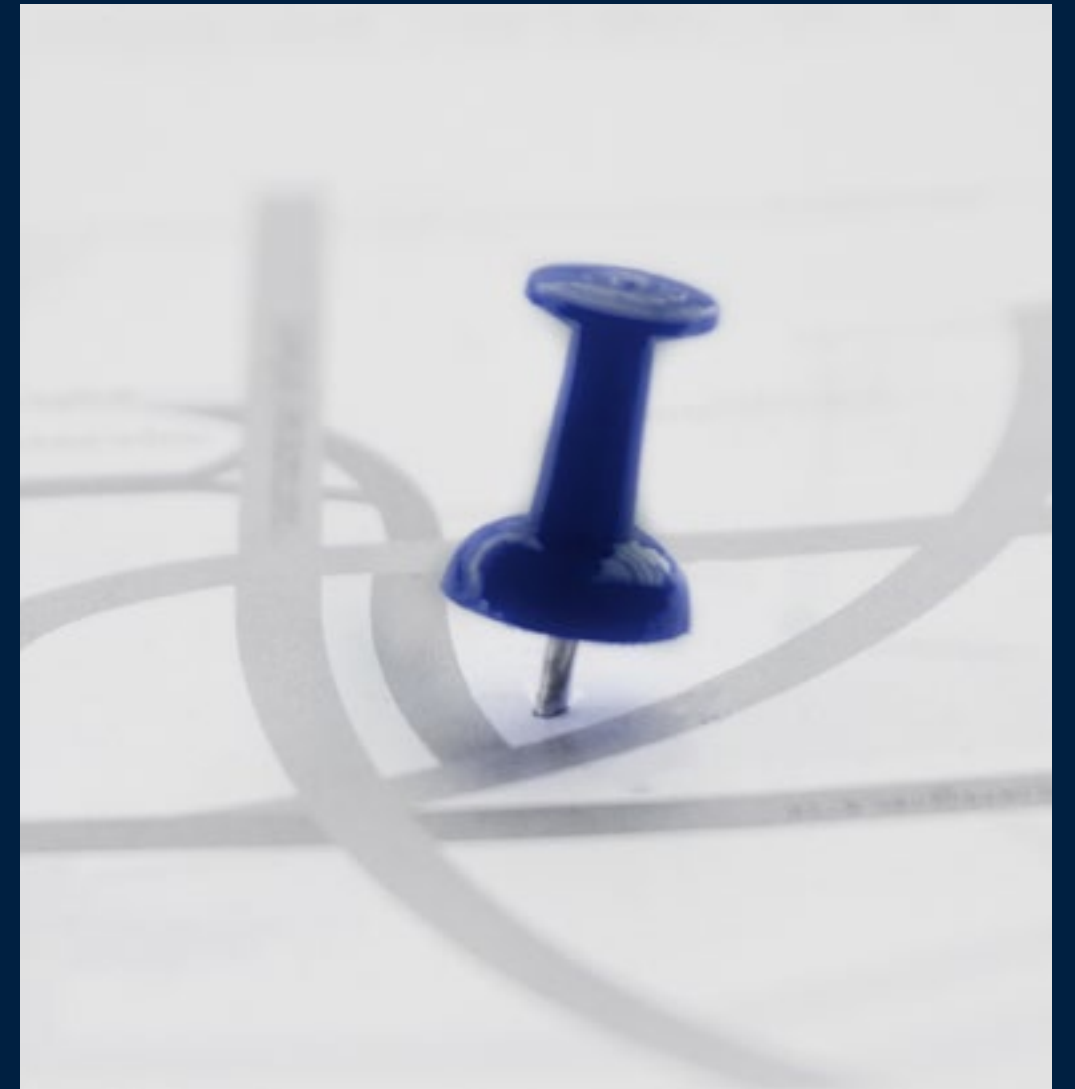




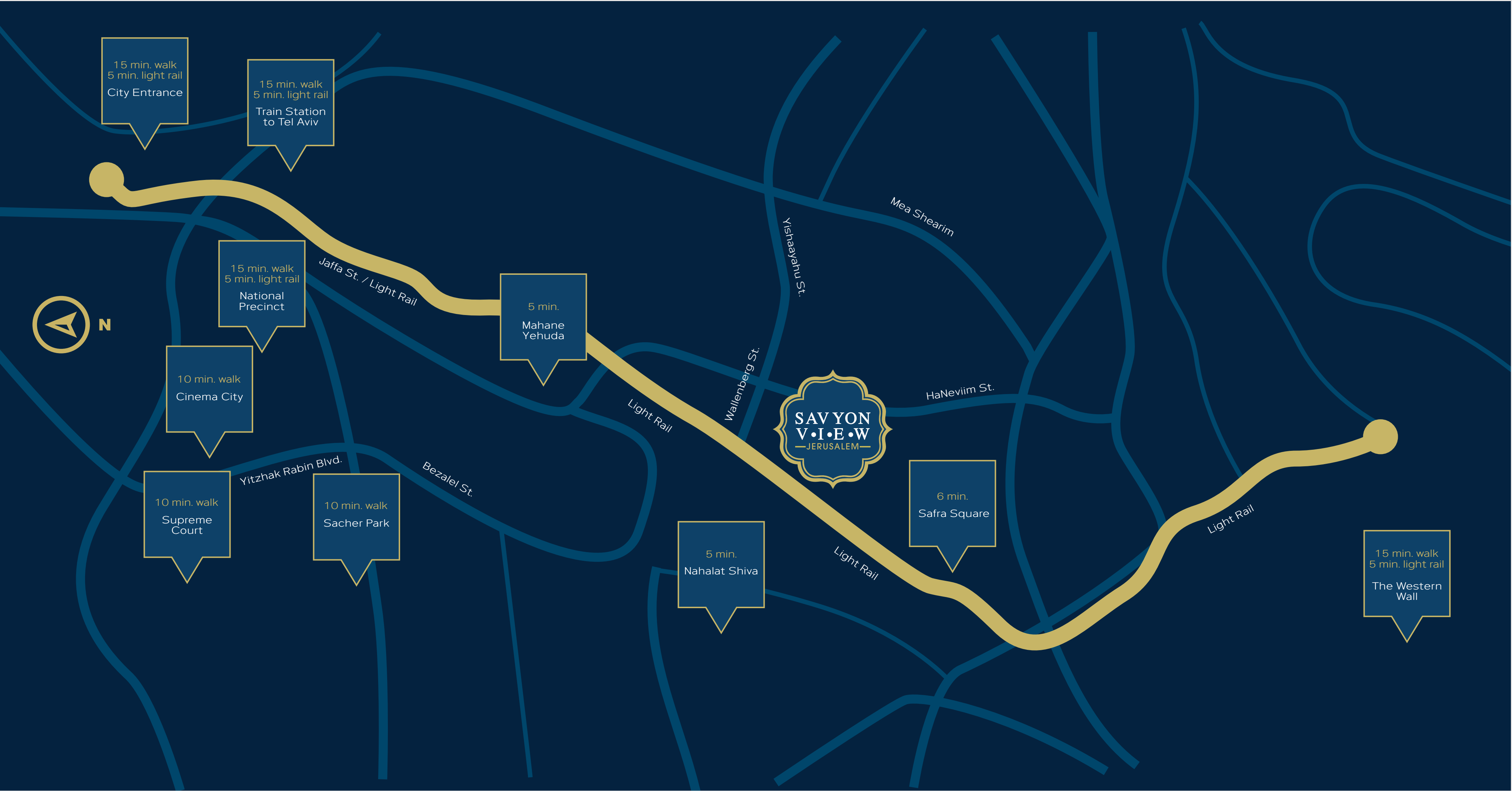
All renderings are for illustrative purposes only. Changes may be made in accordance with the requirements of the authorities and/or at the companies' discretion. The development of public areas may change in accordance with the decision of the local authority, which is solely responsible for performing such development.



Perfect living, perfect location



- Beyond being a first-class residential complex, the Savyon View tower redefines a modern lifestyle concept in the city center and opens a new chapter in the story of Jerusalem.
- The tower is located in the legendary Beit Mapai complex, at the intersection of Jaffa, Raoul Wallenberg and HaNeviim Streets.
- This ideal central location enables easy, convenient access to public transportation, the light rail and the countless Jerusalem attractions within walking distance: Mahane Yehuda Market, Ben-Yehuda Pedestrian Mall, cafes, Mamilla Mall, Nahalat Shiva, Safra Square and many famous gourmet restaurants.



The best of all
worlds meet
in the heart of
Jerusalem





1. The Old City | 2. Magistrate Court | 3. Strauss Street | 4. Russian Compound | 5. Jaffa Street | 6. HaNeviim Street | 7. Zion Square
8. Sergei's Courtyard | 9. Monobaz Street | 10. Savyon View | 11. Raoul Wallenberg Street | 12. King George Junction



AFRICA ISRAEL RESIDENCES

Building on more than 85 years of financial strength and stability, the Africa Israel Residences Group presents a new residential and commercial standard at the highest level of quality and design. The revolutionary concept created by the Group upon its establishment in the early 1930s continues to this day, combining Zionist principles and a deep love for the Land of Israel with an uncompromising commitment to construction excellence. Africa Israel Residences has made its mark as a developer that identifies real estate potential and accordingly establishes successful residential projects that generate urban development around them. The Group is dedicated to constantly improving quality across the board, in terms of product, construction and customer service. This is what enables you, the buyers, to enjoy peace of mind for many years to come.



Visitor Center: 7 Kook Street, Jerusalem

africa-israel.co.il/megurim

+972-2-6744800

+972-58-4258253